



What is a Geopark?

A Geopark is an area recognised by UNESCO (the United Nations Educational Scientific and Cultural Organisation) to have exceptional geological heritage. This simply means that the area has a natural landscape that is good for education, has a significant scientific value, is particularly rare or it is simply beautiful to look at.

Geoparks aren't just about geology though, they also take in sites with interesting archaeology, wildlife and habitats, history, folklore and culture, all of which are intricately linked with the underlying geology.

What makes a Geopark different from designations such as World Heritage Sites is that they have a commitment to sustainably benefit the local economy. This is done by bringing tourists into the region, creating jobs and increasing the need for new businesses, all of which help create an awareness, understanding and preservation of the area's wonderful natural resource.



**Marble Arch Caves
Global Geopark**

Marble Arch Caves Global Geopark

For more information please contact:

Marble Arch Caves Global Geopark,
43 Marlbank Road, Legnabrocky, Florencecourt,
Co. Fermanagh, Northern Ireland, BT92 1EW

Tel: +0044 (0) 28 6634 8855

or

Marble Arch Caves Global Geopark,
Church Street, Ballyconnell, Co. Cavan, Republic of Ireland
Tel: +0044 (0) 49 9526121

E-mail: info@marblearchcavesgeopark.com

Website: www.marblearchcavesgeopark.com

This project has been funded through the European Union's INTERREG IVA Programme and managed by the Special EU Programmes Body.



Under the auspices of
UNESCO



European Union
European Regional
Development Fund
Investing in your future



Marble Arch Caves Global Geopark

About the Marble Arch Caves Global Geopark

Marble Arch Caves Global Geopark inhabits the rugged mountainous uplands of the gentle rolling lowlands of Counties Fermanagh and Cavan. Taking in the world famous Marble Arch Caves as well as amazing new attractions such as Cavan Burren Park, the Geopark showcases some of the finest natural landscapes on the island of Ireland and offers a window into the area's 895 million year past.

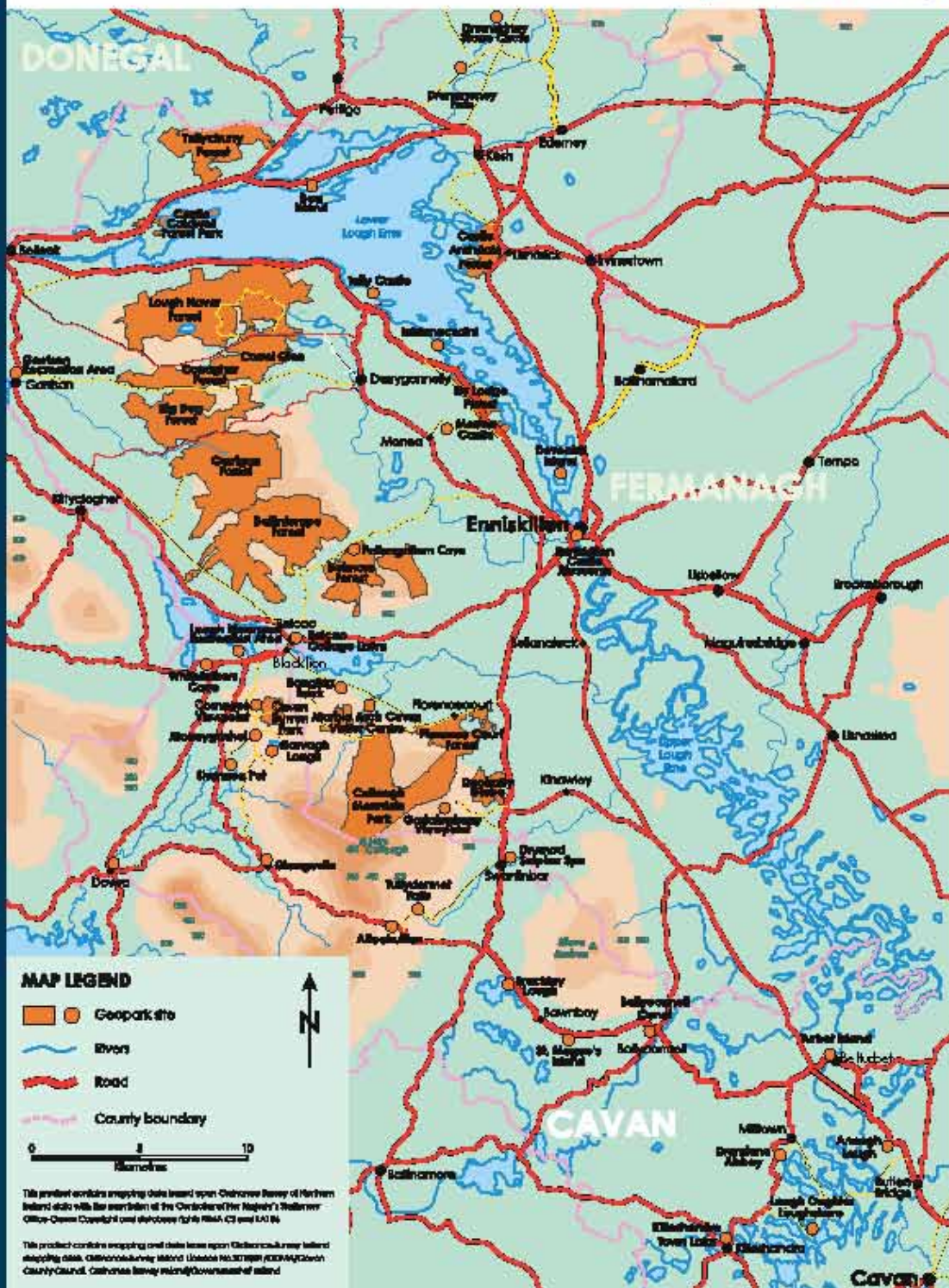
The Marble Arch Caves Global Geopark was one of the first eight Geoparks to be recognised by UNESCO when they launched their Geoparks initiative in 2001. Later, in 2008, the Geopark was expanded to include public lands in West Fermanagh and West Cavan, making it the first cross-border Geopark anywhere in the world.

There are Global Geoparks in most European countries and many more worldwide; the Marble Arch Caves Global Geopark is one of the largest. The Geopark is jointly managed by Fermanagh District Council and Cavan County Council.

Events In the Geopark

An ongoing programme of events takes place in the Geopark, where people can explore our landscapes and enjoy the wonders of the natural environment. Fossil fun days, heritage trails, guided walks and scavenger hunts are examples of some of the activities taking place in the Geopark. For more information on events please see www.marblearchcavesgeopark.com

Marble Arch Caves Global Geopark



The Geopark takes in numerous fascinating sites throughout Fermanagh and Cavan which provide for a variety of interests including not only geology but also archaeology, history, folklore and activities such as walking, cycling, canoeing and fishing.

Waterfalls, old abbeys, megalithic tombs, forests, fabulous landscapes and amazing showcaves are among some of the high quality attractions included within the Geopark.

The map illustrates the many sites included within the Geopark. These are indicated by orange circles or blocks of colour. The sites marked on this map, with the exception of Marble Arch Caves, are open to the public all year round and are there for your enjoyment.

Up-to-date information on events can be obtained by visiting the Geopark website or by contacting the Marble Arch Caves Visitor's Centre

For more detailed information about any of these sites please visit www.marblearchcavesgeopark.com.